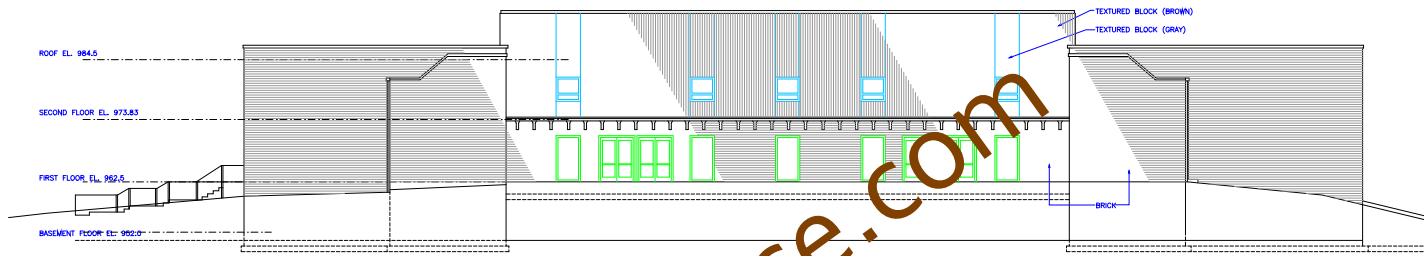
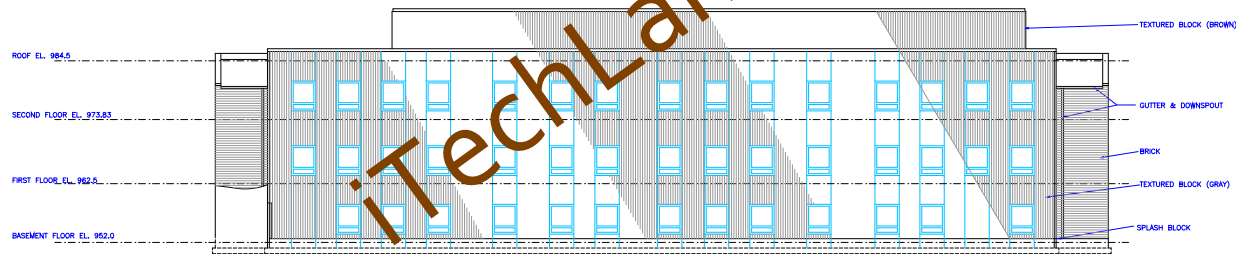


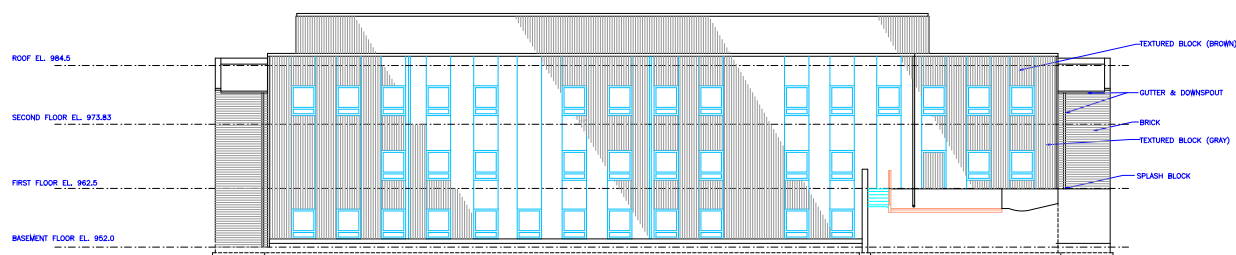
BLUE RIDGE ELEVATION
SCALE 3/32" = 1'-0"



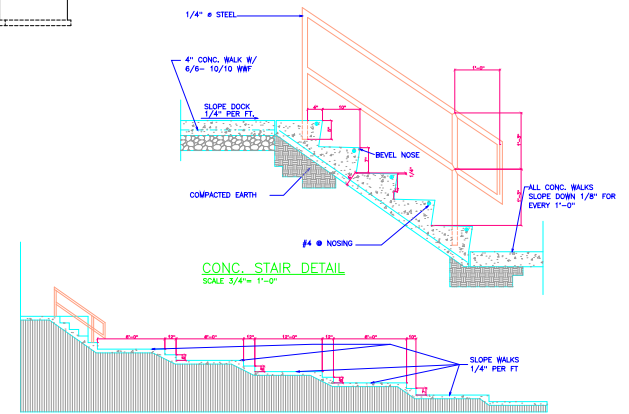
MAIN ENTRANCE ELEVATION
SCALE 3/32" = 1'-0"



SOUTH ELEVATION
SCALE 3/32" = 1'-0"



NORTH ELEVATION
SCALE 3/32" = 1'-0"



SECTION THRU WALKWAY AT DOCK
SCALE 3/16" = 1'-0"